

## OHV RIDING RESPONSIBILITIES IN GARFIELD COUNTY

- 1. OFF-HIGHWAY VEHICLES, DEFINITIONS:**  
OHV's eligible to be used on Garfield County's Road System as all snowmobiles, motorcycles, and all terrain type vehicles; any motor vehicle 55 inches or less in width, having an unladen dry weight of 1000 pounds or less; traveling on two or more low pressure tires, having a seat designed to be strapped by the operator; and capable of travel over unimproved terrain.
- 2. COMPLIANCE WITH ALL TRAFFIC LAWS:**  
Any person operating an off-highway vehicle is subject to all of the provisions of Title 41 Chapter 6 Utah Code Annotated, as amended, (Traffic Code) which include but is not limited to:
  - a. No person under 16 years of age will be allowed to operate an OHV on the Garfield County Road System.
  - b. OHV Operators between the age of eight through fifteen must possess an OHV education certificate issued by the Utah Division of Parks and Recreation.
  - c. All operators sixteen years and older must possess a valid driver's license or OHV education certificate.
  - d. All riders under eighteen years of age must wear a properly fitting, safety regulated helmet.
  - e. No person under fourteen years of age may operate on any County Class B Road as part of the system unless in the company of someone at least sixteen years of age with a valid drivers license or having an OHV Education Certificate in possession, and must be no further away from that person than communicating distance at any time.



## IMPORTANT USER INFORMATION

Every effort was made to ensure the accuracy of this map. The map complies with Garfield County's OHV Ordinance. In order to avoid any potential conflicts, please check with the local City, County, State, and Federal Land Management Agencies to verify compliance with regulations, ordinances, and current designations.

Travel at your own risk. The Routes on this map are graphical representations to be used for travel planning purposes only. Most of the routes on this map are roads of varying widths and surfaces including two tracks, native soil, gravel, or paved. Route conditions and designations are always subject to change. Please obtain current route information prior to travel.

The Garfield County OHV Route System provides riding opportunities into the world class landscapes of Southern Utah's canyons and plateaus. Routes are mapped for clarity and ease of use. However, since the routes traverse lands managed by different agencies, the rules vary from one location to another.

These routes will take you through or to public lands managed by the State of Utah, Dixie National Forest, Bureau of Land Management (BLM) Field Offices, Grand Staircase-Escalante National Monument, National Park Service, and Utah State Parks. Each agency has rules designed to protect public resources, which vary by agency and sometimes by season. Where routes go through towns, trailheads and designated OHV routes may be established to provide access to services. Please use only the designated routes in these towns.

Regulations can vary between agencies and between seasons including: campfire regulations, camping permits, group size limits, and designated campsites. Collection of natural objects (plant and animal material, rocks, fossils, petrifed wood) requires a special permit on most of these lands. Some OHV routes are restricted to vehicles with 50 inch maximum width.

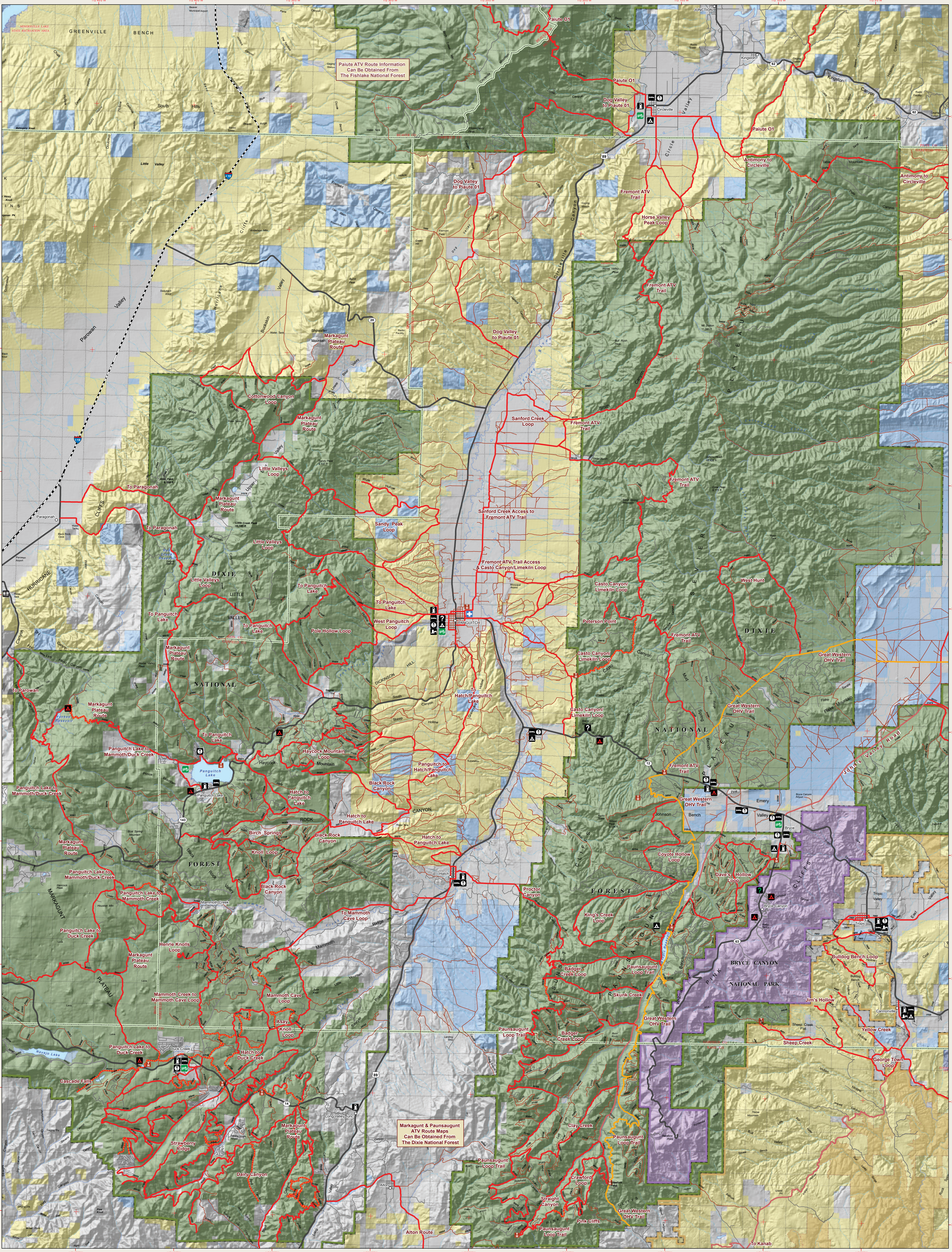
The Bureau of Land Management and the Forest Service are currently revising their Resource and Travel Management Plans. Once the revision process is complete, there may be changes to OHV area designations and routes. This could result in future changes to the information shown on this map.

Each rider is responsible for knowing the rules that apply to the lands they are using. It is important to be informed before riding. You can get information on regulations from agency websites (listed on this map), agency brochures and publications, or at the visitor centers shown on this map.

Each of us must ride responsibly on all public and private lands.



# REGION 1



- 3. OPERATIONS OF VEHICLE ON HIGHWAYS:**  
No person may operate an off-highway vehicle upon any street or highway not designated as open to off-highway vehicle use except:
  - a. When crossing a street or highway and the operator comes to a complete stop before crossing, proceeds only after yielding the right of way to oncoming traffic, and crosses at a right angle.
  - b. When loading or unloading any off-highway vehicle from a vehicle which shall be done with due regard for safety and at the nearest practical point of operation.
  - c. When an emergency exists during any period of time and at those locations when operation of conventional motor vehicles is impractical or when the operation is directed by a peace officer or other public authority.

**4. REGISTRATION:**  
All vehicles operated on the Garfield County Road System must be either safety inspected and licensed by the Utah Division of Motor Vehicles, or registered as an OHV by the Utah Division of Motor Vehicles, or are duly registered by the appropriate agency in the state in which the owner



Utah  
RIDE ON  
DESIGNATED ROUTES

REVISED APRIL 2016  
The Garfield County ATV/OHV Route Map was prepared by the Cooperative Parks and Recreation from the Division of Utah Parks & Recreation, the State of Utah Automated Geographic Reference Center.

## SAFETY CONSIDERATIONS:



BE PREPARED...

Plan ahead. The weather can change rapidly.

Carry all necessary supplies including an emergency repair kit, food, water, and warm clothing. Carry at least 1 gallon of water per person per day. Even on dry rides bring emergency gear for spending a night out if necessary.

Develop a supply checklist to include the above items and other equipment such as area maps and guides, protective gear, flashlight, sunscreen, etc.

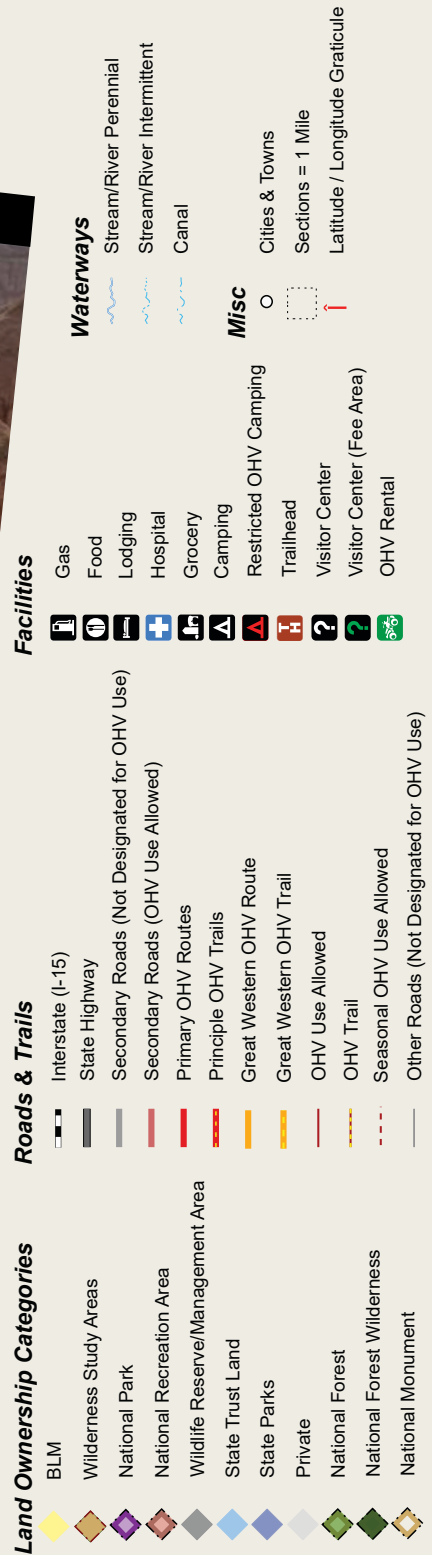
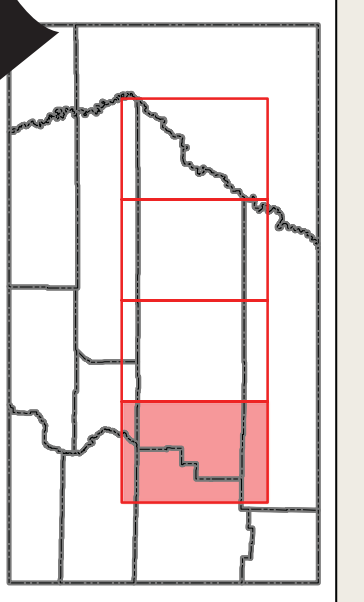
Know what to wear. Quality helmets, gloves, boots, goggles, and protective clothing will keep you comfortable and help prevent serious injuries.

Know your vehicle. Keep it in good condition and read the owner's manual.

Travel with other people.

Know before leaving what to do in an emergency. Cell phone service is not guaranteed.

Always let a responsible person know where you are going; what route you intend to use; and when you plan to return.



## GARFIELD COUNTY ATV & OHV ROUTE MAP

### Welcome to Garfield County's OHV Route System

Garfield County is 5270 square miles located in south central Utah and home to over 3000 miles of the most scenic ATV/OHV routes in the world. Our red rock and slick rock formations, verdant forests, and spectacular deserts await your exploration.

Some of the routes on this map were established by early pioneers in their quest for fertile land to raise cattle, crops, and their families. In later times, timber harvesting, mining exploration, and recreation were the economic drivers to gain access to the more remote areas.

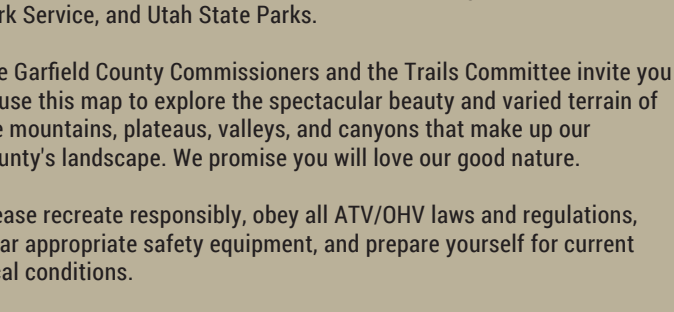
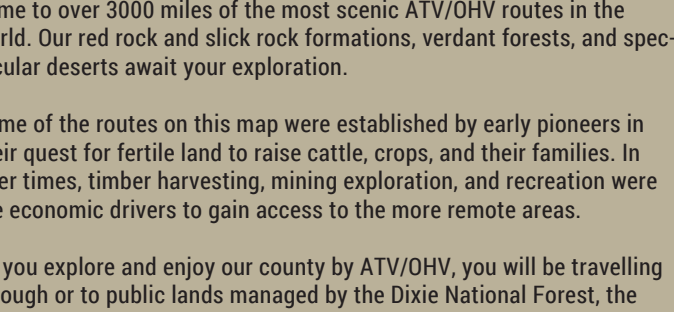
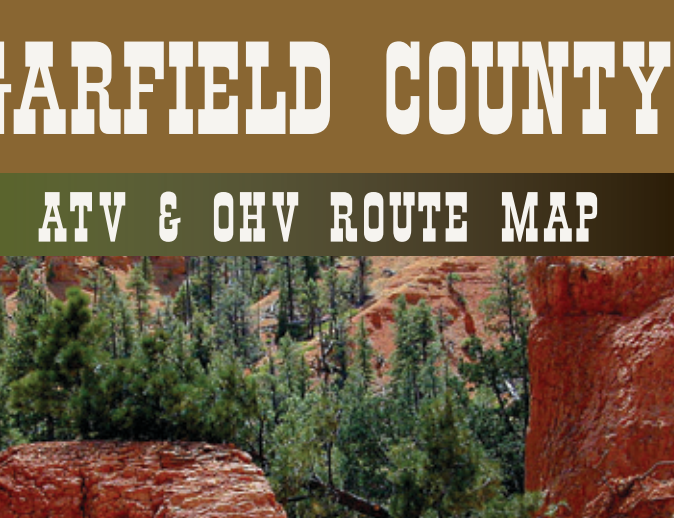
As you explore and enjoy our county by ATV/OHV, you will be traveling through or to public lands managed by the Dixie National Forest, the Fishlake National Forest, the Bureau of Land Management, the National Park Service, and Utah State Parks.

The Garfield County Commissioners and the Trails Committee invite you to use this map to explore the spectacular beauty and varied terrain of the mountains, plateaus, valleys, and canyons that make up our County's landscape. We promise you will love our good nature.

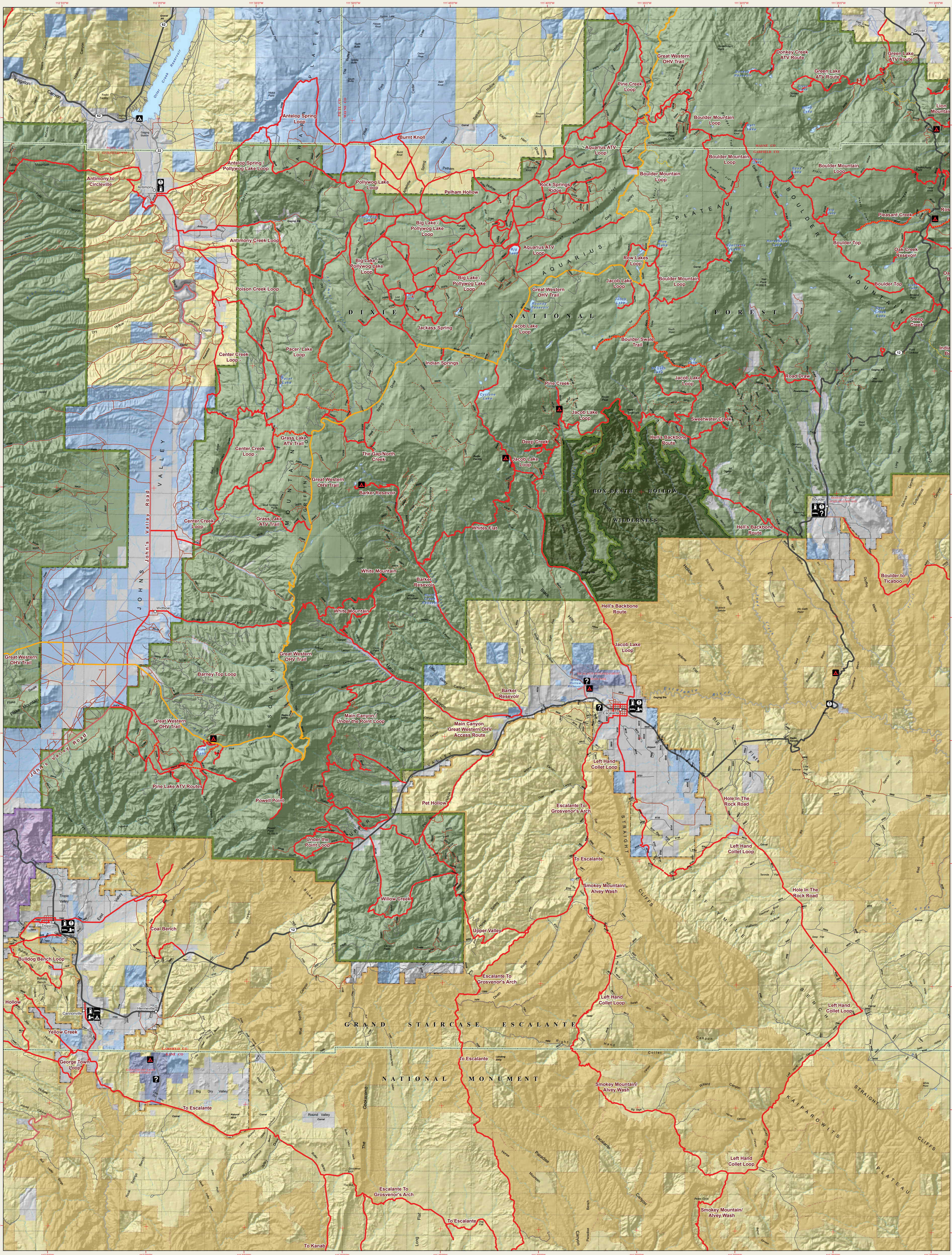
Please recreate responsibly, obey all ATV/OHV laws and regulations, wear appropriate safety equipment, and prepare yourself for current local conditions.

NOT FOR SALE

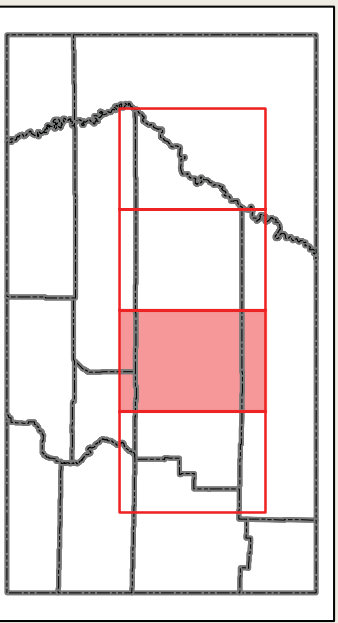
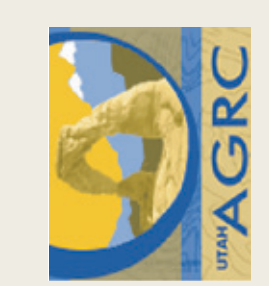
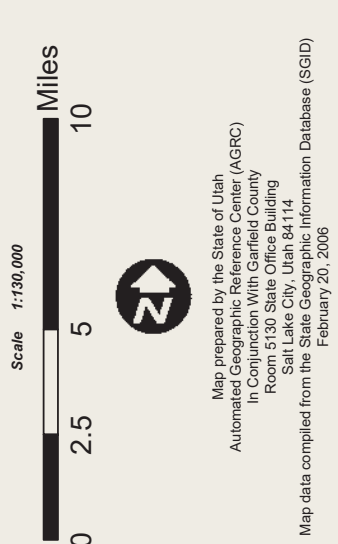
## REGIONS 1 & 2







# REGION 2



- Land Ownership Categories**
- BLM Wilderness Study Area
  - National Park
  - Wildlife Resource Management Area
  - State Trust Land
  - Private
  - National Forest
  - National Monument
- Roads & Trails**
- Interstate (I-15)
  - Primary OHV Routes
  - Secondary OHV Routes (Not Designated for OHV Use)
  - Other Roads (Not Designated for OHV Use)
- Facilities**
- Gas
  - Food
  - Restrooms
  - Drinking Water
  - Highway
  - Concession
  - Camping
  - Trailhead
  - Visitor Center (if on Area)
  - OHV Center
- Other Symbols**
- Gas Station
  - Food
  - Restroom
  - Drinking Water
  - Highway
  - Concession
  - Camping
  - Trailhead
  - Visitor Center
  - OHV Center

## GARFIELD COUNTY ATV/OHV ROUTES SIGNING

**JUNCTION DIRECTIONAL MARKERS**  
Indicate the Forest Boundary

**REASSURANCE MARKERS**  
Outside the Forest Boundary

**ROAD NUMBER MARKER**  
On brown fiberglass marker located at road junctions, indicates road is on Garfield County Road System.

**COUNTY ROAD NUMBER MARKER**  
On brown fiberglass marker located at road junctions, indicates road is on Kane County Road System.

**FOREST ROAD NUMBER MARKER**  
On brown fiberglass marker located at road junctions, indicates road is on Kane County Road System.

**JUNCTION POST**  
A 4" x 4" post located at the trail junction indicates the trail number and directional arrow. These are one or two-digit numbers.

**REASSURANCE MARKER**  
A fiberglass marker with a color-coded directional arrow and a one or two-digit trail number indicates the continuing direction of the trail.

**CLOSURE MARKER**  
A fiberglass marker in the middle of the trail indicates a closure for soil wildlife and resource protection.

## STAY ON THE TRAIL!



## HIGHWAY MILEAGE CHART

COMMUNITIES WITHIN GARFIELD COUNTY

	Antimony	Boulder	Cannonville	Escalante	Hatch	Panguitch	Ticabo	Tropic
Antimony	0	78	49	51	63	48	145	44
Boulder	78	0	78	27	95	34	74	66
Cannonville	49	61	0	35	34	93	134	5
Escalante	51	27	35	0	69	66	100	40
Hatch	63	95	34	69	0	15	168	29
Panguitch	48	94	33	66	15	0	167	28
Ticabo	145	74	134	100	168	167	0	139
Tropic	44	66	5	40	29	28	139	0

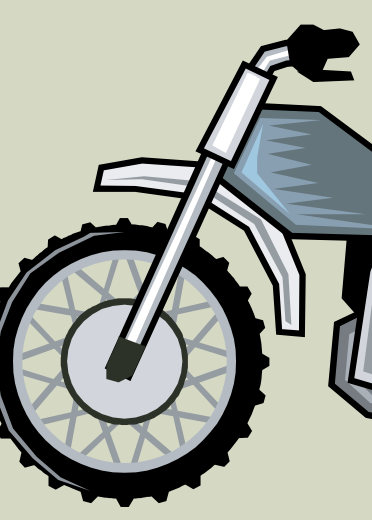
OTHER CITIES OUTSIDE OF GARFIELD COUNTY

	Bull Frog, Utah	Cedar City, Utah	Hanksville, Utah	Kanab, Utah	Richfield, Utah	St. George, Utah	Salt Lake City, Utah
Bull Frog, Utah	131	72	133	99	167	165	13
Cedar City, Utah	114	160	99	132	81	66	233
Hanksville, Utah	91	83	145	111	145	140	54
Kanab, Utah	116	147	86	121	52	68	220
Richfield, Utah	63	100	111	99	93	78	165
St. George, Utah	166	212	151	184	133	120	285
Salt Lake City, Utah	221	246	279	274	261	246	375

OTHER CITIES OUTSIDE OF UTAH

	Denver, Colorado	Las Vegas, Nevada	Page, Arizona	Phoenix, Arizona
Denver, Colorado	490	483	545	510
Las Vegas, Nevada	285	331	270	303
Page, Arizona	189	220	159	194
Phoenix, Arizona	462	493	432	467

*Mileage approximated*



For Information Regarding ATV/OHV Routes & Accommodations in Garfield County contact:

**GARFIELD COUNTY TRAVEL COUNCIL**  
www.brycecanyoncountry.com  
travpac@color-country.net  
1-800-444-6689 or (435) 576-1160  
55 South Main Street  
Panguitch, Utah 84759

Agency Symbols are for contact information only and do not express or imply concurrence.

For Specific ATV/OHV Route Information & Regulations contact:

**DIXIE NATIONAL FOREST RANGER DISTRICTS**  
www.fs.fed.us/4/dixie

Cedar City Ranger District  
1789 N. Wedgewood Lane  
Cedar City, Utah 84720  
(435) 865-3700

Powell Ranger District  
225 East Center St.  
P.O. Box 80  
Panguitch, Utah 84759  
(435) 676-9300

Escalante Ranger District  
755 West Main Street  
P.O. Box 246  
Escalante, Utah 84726  
(435) 826-5499

**BRYCE CANYON NATIONAL PARK**  
P.O. Box 640201  
Bryce, Utah 84764  
(435) 834-5322

**CAPITOL REEF NATIONAL PARK**  
HC 70 Box 15  
Torrey, Utah 84775  
(435) 425-3791 ext. 111  
www.nps.gov/capn

**CANYONLANDS NATIONAL PARK**  
2282 SW Resource Blvd.  
Moab, Utah 84532  
(435) 719-2313

**FISHLAKE NATIONAL FOREST RANGER DISTRICTS**  
www.fs.fed.us/4/fishlake

Richfield Ranger District  
115 E. 900 N.  
Richfield, Utah 84701  
(435) 896-9233

Fremont River Ranger District  
P.O. Box 129  
138 South Main Street  
Loa, Utah 84747  
(435) 836-2800

**BUREAU OF LAND MANAGEMENT**  
www.blm.gov

Kanab Field Office  
669 South Highway 89A  
Kanab, Utah 84741  
Phone: (435) 644-1200  
Fax: (435) 644-1299

Richfield Field Office  
150 E. 900 N.  
Richfield, Utah 84701  
(435) 896-1500

Henry Mountain Field Station  
380 S. 100 W.  
Hanksville, Utah 84734  
(435) 542-3461

**GLEN CANYON NATIONAL RECREATION AREA**  
www.nps.gov/gjca/

Glen Canyon NRA  
P.O. Box 1507  
Page, Arizona 86040  
Phone: (928) 608-6200  
Fax: (928) 608-6259

Bullfrog Visitor Center  
Highway 276 north of Bullfrog Marina  
Phone: (435) 684-7423  
(May thru early October only)

**GRAND STAIRCASE ESCALANTE NATIONAL MONUMENT**  
www.ut.blm.gov/monument

Cannonville Visitor Center  
10 Center Street  
P.O. Box 180061  
Cannonville, Utah 84718  
(Open Seasonally March - November)  
Phone: (435) 826-5640  
Fax: (435) 679-8983

Escalante Field Station  
755 West Main Street  
Escalante, Utah 84726  
Phone: (435) 826-5600  
Fax: (435) 826-5650  
Mail: UT-Escalante@blm.gov

Kanab Visitor Center  
745 East Highway 89  
Kanab, Utah 84741  
(435) 644-1300

Boulder Contact Station / Anasazi State Park Museum  
P.O. Box 1429  
Boulder, Utah 84716  
(Open Seasonally April - November)  
(435) 355-7382

**UTAH STATE PARKS**  
www.stateparks.utah.gov

**UTAH STATE PARKS**  
www.stateparks.utah.gov

P.O. Box 146001  
1594 West North Temple, Suite 116  
Salt Lake City, Utah 84114-6001  
(801) 538-7220

Anasazi State Park Museum  
P.O. Box 1429  
Boulder, Utah 84716  
(435) 355-7308

Escalante State Park  
710 North Reservoir Rd.  
Escalante, Utah 84726  
(435) 826-4466

Kodachrome Basin State Park  
P.O. Box 180069  
Cannonville, Utah 84718  
(435) 679-8562

**UTAH OHV SAFETY & EDUCATION**  
www.stateparks.utah.gov/ohv

P.O. Box 146001  
1594 West North Temple, Suite 116  
Salt Lake City, Utah 84114-6001  
ohveducation@utah.gov

**IN CASE OF EMERGENCY CALL 911**  
Garfield County Sheriff (435) 676-2678

**NATIONAL FOREST ROUTE MARKERS**

**13**  
Roads suitable for HIGH clearance vehicles only

**214**  
Roads suitable for HIGH clearance vehicles only

**OTHER SIGNS AND MARKERS**

**TWO-WHEEL MOTOR VEHICLE**

**ALL TERRAIN VEHICLE**

**WILDLIFE RESERVE**

**DESIGNATED OFF-ROADS**

**CLOSED TO MOTOR VEHICLES**

**FOR SOIL & WILDLIFE PROTECTION**

**VEHICLE PROTECTION**

**CLOSED TO MOTOR VEHICLES**

**FOR SOIL & WILDLIFE PROTECTION**

